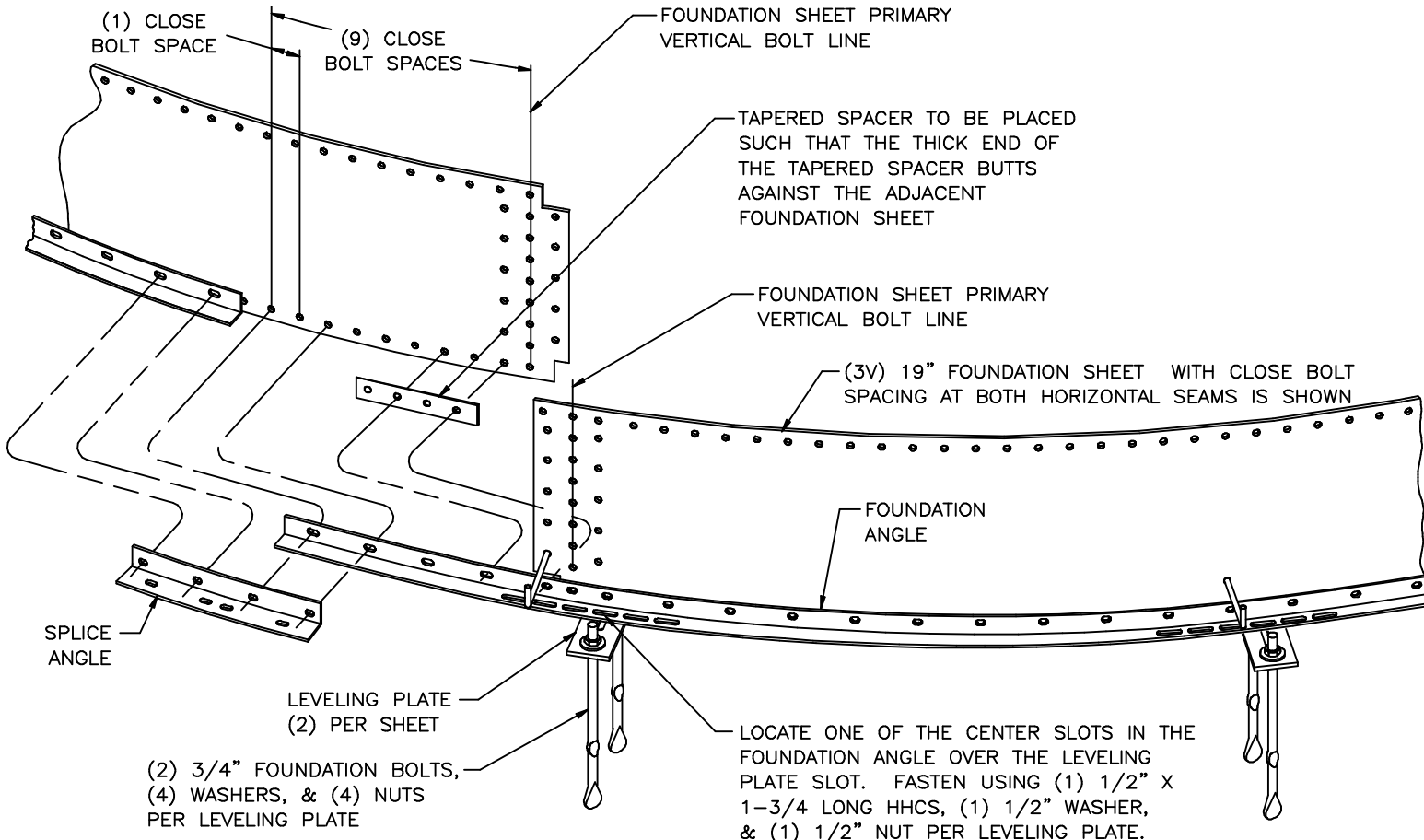


STRUCTURE BOLT COUNTS FOR THE FOUNDATION SHEET / FOUNDATION ANGLE HORIZONTAL SEAM AND THE FOUNDATION SHEET VERTICAL SEAM ARE SPECIFIED ON THE FOLLOWING CONSTRUCTION DETAIL FOUNDATION ASSEMBLY DRAWINGS.

- 261918 (3V) 19" FOUNDATION SHEET ASSEMBLY WITH WIDE BOLT SPACING AT BOTTOM HORIZONTAL SEAM
- 266281 (3V) 19" FOUNDATION SHEET ASSEMBLY WITH CLOSE BOLT SPACING AT BOTTOM HORIZONTAL SEAM
- 261919 (4V) 19" FOUNDATION SHEET ASSEMBLY WITH WIDE BOLT SPACING AT BOTTOM HORIZONTAL SEAM
- 266282 (4V) 19" FOUNDATION SHEET ASSEMBLY WITH CLOSE BOLT SPACING AT BOTTOM HORIZONTAL SEAM
- 266594 (5V) 19" FOUNDATION SHEET ASSEMBLY WITH WIDE BOLT SPACING AT BOTTOM HORIZONTAL SEAM
- 266595 (5V) 19" FOUNDATION SHEET ASSEMBLY WITH CLOSE BOLT SPACING AT BOTTOM HORIZONTAL SEAM



REL	DESCRIPTION	ECN DR. BY
1	RELEASED FOR PRODUCTION	90034 DMN
2	REVISED COPYRIGHT STATEMENT; REMOVED BOLT COUNTS AND DIRECTED THE USER TO APPROPRIATE DRAWINGS WITH THE CORRECTED COUNTS	91149 DMN
3	ADDED ANCHOR ROD SETS PER LATEST FOUNDATION DESIGN	96082 RKK 3-96
4	REVISED ANCHOR ROD SETS PER LATEST FOUNDATION DESIGN	99226 TAK 11-99
5	ADDED (5V) 19" FOUNDATION SHEET ASSEMBLY	01151 TAK 08-01
<p>ENGINEERED STORAGE PRODUCTS COMPANY</p> <p>DEKALB, ILLINOIS 60115</p> <p>CONFIDENTIAL</p> <p>THIS DRAWING IS THE PROPRIETARY PROPERTY OF ENGINEERED STORAGE PRODUCTS COMPANY AND SHALL NOT BE USED NOR REPRODUCED WITHOUT THE EXPRESS WRITTEN CONSENT OF THE COMPANY.</p> <p>ESPC COPYRIGHT © 2001 ALL RIGHTS RESERVED</p>		
DRAWN BY DMN		
DATE 08/20/91		
<p>CONSTRUCTION DETAIL</p> <p>19" FOUNDATION</p> <p>GENERAL ASSEMBLY</p> <p>SHORT STARTER</p> <p>CONCRETE FOUNDATION</p>		
DRWG NO.	261344	